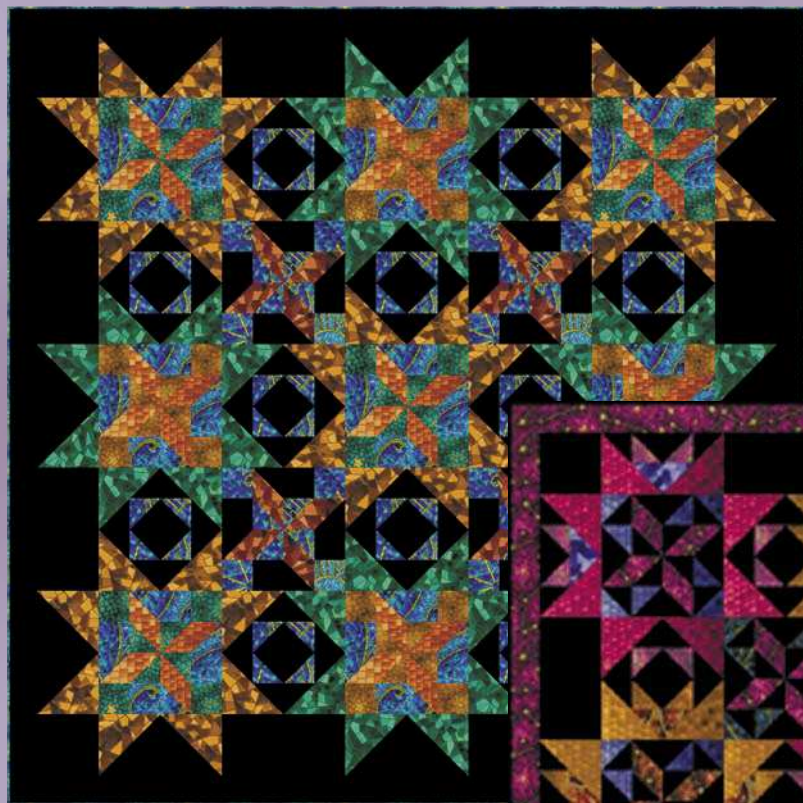


Celestial Creations



58½" x 58½" (Clay's Choice Option)



58½" x 58½" (Mosaic No. 13 Option)

Featuring fabrics from Celestial Creations

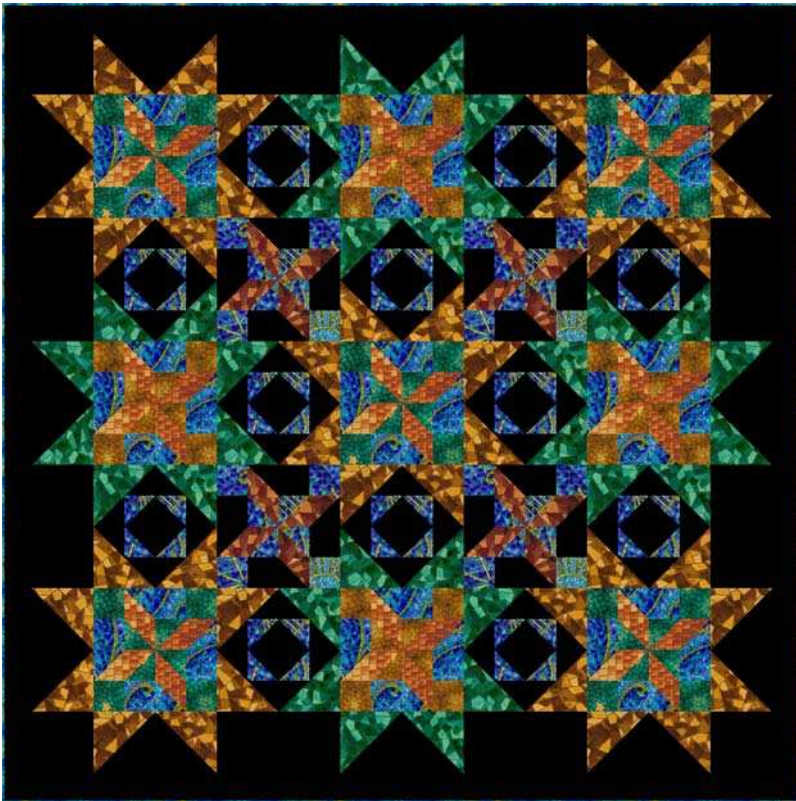


Designed with Electric Quilt 5 (EQ5) Software
This pattern is available exclusively on the Electric Quilt website at
www.electricquilt.com



Celestial Creations - Clay's Choice — Information

(All dimensions are in inches - Horizontal then Vertical)



Style: Horizontal/Straight Set

Overall size: 58 ½" x 58 ½"

Main Blocks: 5 x 5 Blocks

Finished Size: 9" x 9"

Total Blocks: *13 Clay's Choice Blocks*
12 Twelve Triangle Blocks

Sashing: None

Number of Borders: 2

† After your quilt center is finished, please measure horizontally and vertically through the center of your quilt. If the center of your quilt does not measure 45½" x 45½", you may need to adjust the following lengths of your borders to fit.

Border 1:

Border Style: Blocks

Finished Widths: Left: 4½" Top: 4½" Right: 4½" Bottom: 4½"

Blocks in Border Horizontal: 5 Vertical: 5

Total Blocks: 12 Half-Diamond in the Square Blocks

8 Plain Blocks (Rectangles 5" x 9½")

4 Plain Cornerstone Blocks (Squares 5" x 5")

Border 2:

Border Style: Long Horizontal

Finished Widths: Left: 2" Top: 2" Right: 2" Bottom: 2"

Cut 6 strips at 2½" x 44"

Subcut 2 at 2½" x 58½"

Subcut 2 at 54½" x 2½"

To create the inner border:

1. Piece together the Half-Diamond in a Square blocks as shown on page 5
2. Piece together the top and bottom borders as shown, including the corner squares
3. Piece together the side borders as shown



Top and bottom borders

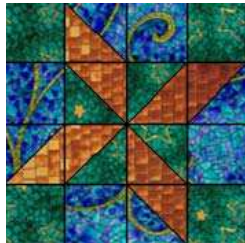


Right and left borders

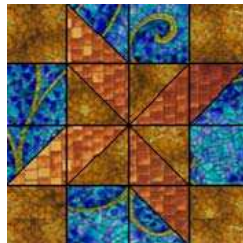
Cutting out the Clay's Choice Blocks

In order to complete a Celestial Creations quilt, you either need 13 Clay's Choice blocks or 13 Mosaic No. 13 Blocks, not both.

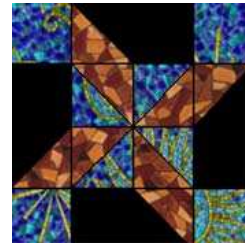
At the end of these directions are three different options for constructing one of the **Clay's Choice Blocks** — rotary cutting, templates, and foundation pattern — all generated from Electric Quilt 5.



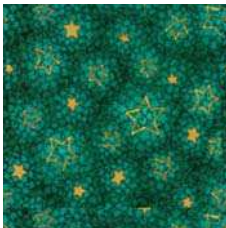
Make 5



Make 4

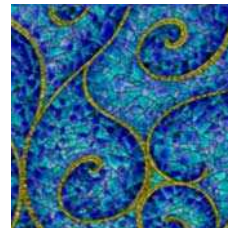


Make 4



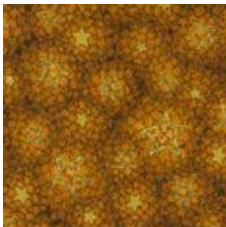
5593-05

Cut 20 "A" templates
Cut 20 "B" templates



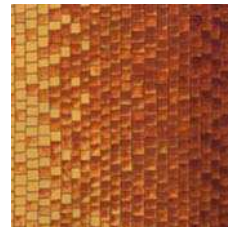
5592-01

Cut 36 "A" templates
Cut 36 "B" templates



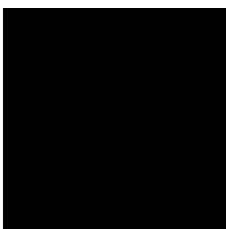
5593-07

Cut 16 "A" templates
Cut 16 "B" templates



5595-03

Cut 72 "B" templates



Solid Black

Cut 16 "A" templates
Cut 16 "B" templates



5590-01

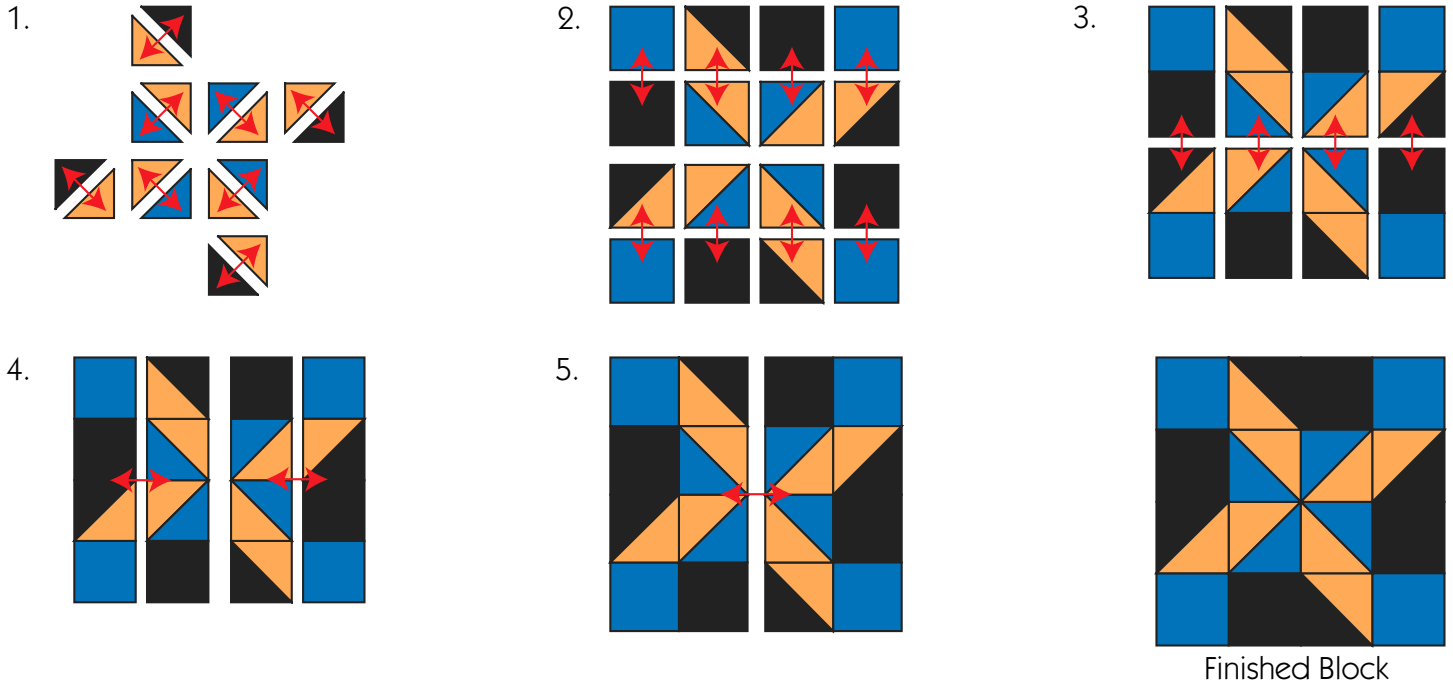
Cut 16 "A" templates
Cut 16 "B" templates



5594-03

Cut 32 "B" templates

Sewing the Clay's Choice Blocks



Cutting out the Twelve Triangles Blocks

Make 4

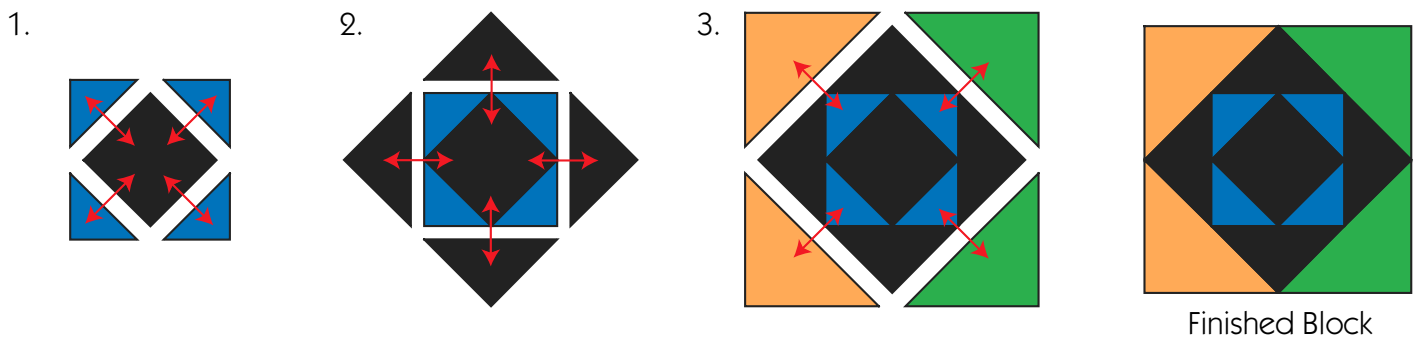
Solid Black
Cut 48 "B" templates
Cut 12 "D" templates

5594-07
Cut 24 "A" templates

5590-01
Cut 48 "C" templates

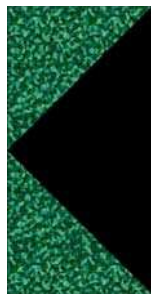
5594-05
Cut 24 "A" templates

Sewing the Twelve Triangles Blocks



Cutting out the Half-Diamond in the Square Blocks

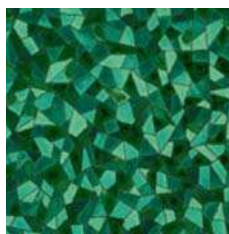
At the end of these directions are three different options for constructing one of the **Half-Diamond in the Square blocks** — rotary cutting, templates, and foundation pattern — all generated from Electric Quilt 5.



Make 4



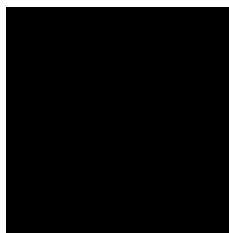
Make 8



5594-05
Cut 8 “A” templates

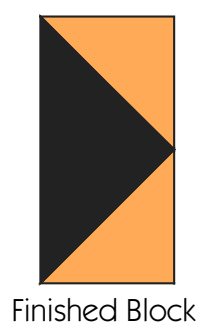
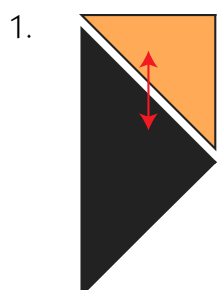
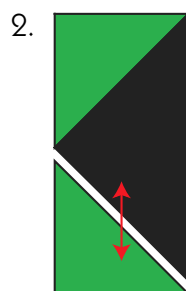
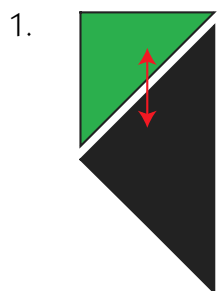


5594-07
Cut 16 “C” templates

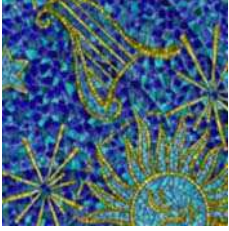


Solid Black
Cut 12 “B” templates

Sewing the Half-Diamond in the Square Block



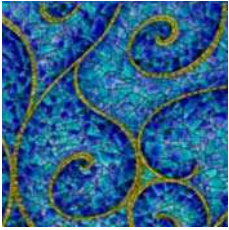
Fabric Yardage



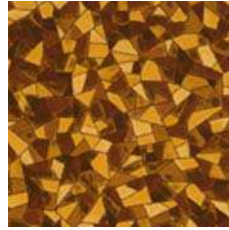
5590-01
Pieced Blocks: 1/2 YARD



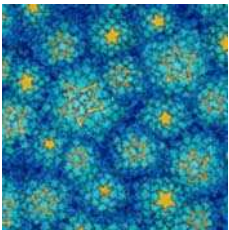
5594-05
Pieced Blocks: 5/8 YARD



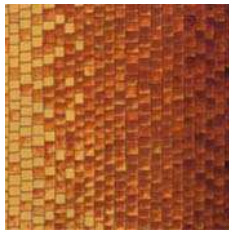
5592-01
Pieced Blocks: 1/2 YARD



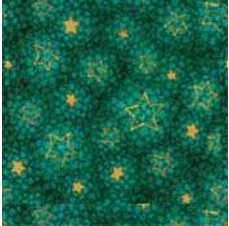
5594-07
Pieced Blocks: 5/8 YARD



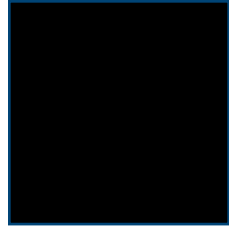
5593-01
Binding: 1/2 YARD
Cut 6 strips at 2 1/4" x 44"



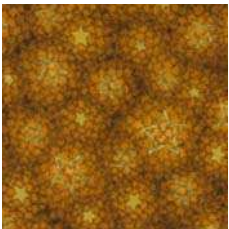
5595-03
Pieced Blocks: 3/8 YARD



5593-05
Pieced Blocks: 3/8 YARD
Backing 3 3/4 YARDS



Solid Black
Pieced Blocks: 1 1/4 YARDS
Border 1: 1/2 YARD
Border 2: 1/2 YARD



5593-07
Pieced Blocks: 3/8 YARDS



5594-03
Pieced Blocks: 1/4 YARD

Celestial Creations - Mosaic No. 13 — Quilt Information

(All dimensions are in inches - Horizontal then Vertical)



Style: Horizontal/Straight Set

Overall size: 58 ½" x 58 ½"

Main Blocks: 5 x 5 Blocks

Finished Size: 9" x 9"

Total Blocks: *13 Mosaic No. 13 Blocks*
12 Twelve Triangle Blocks

Sashing: None

Number of Borders: 2

† After your quilt center is finished, please measure horizontally and vertically through the center of your quilt. If the center of your quilt does not measure 45½" x 45½", you may need to adjust the following lengths of your borders to fit.

Border 1:

Border Style: Blocks

Finished Widths: Left: 4½" Top: 4½" Right: 4½" Bottom: 4½"

Blocks in Border Horizontal: 5 Vertical: 5

Total Blocks: 12 Half-Diamond in the Square Blocks

8 Plain Blocks (Rectangles 5" x 9½")

4 Plain Cornerstone Blocks (Squares 5" x 5")

Border 2:

Border Style: Long Horizontal

Finished Widths: Left: 2" Top: 2" Right: 2" Bottom: 2"

Cut 6 strips at 2½" x 44"

Subcut 2 at 2½" x 58½"

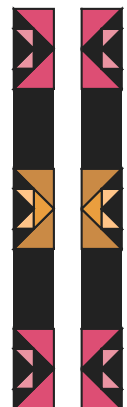
Subcut 2 at 54½" x 2½"

To create the inner border:

1. Piece together the Half-Twelve Triangles blocks as shown on page 12
2. Piece together the top and bottom borders as shown, including the corner squares
3. Piece together the side borders as shown



Top and bottom borders

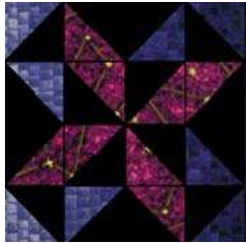


Right and left borders

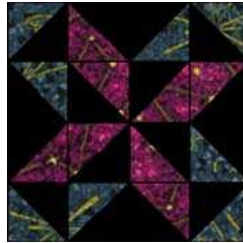
Cutting out the Mosaic No. 13 Blocks

In order to complete a Celestial Creations quilt, you either need 13 Clay's Choice blocks or 13 Mosaic No. 13 Blocks, not both.

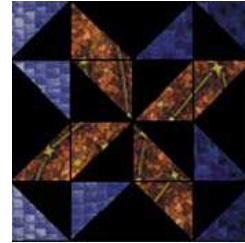
At the end of these directions are three different options for constructing one of the **Mosaic No. 13 Blocks** — rotary cutting, templates, and foundation pattern — all generated from Electric Quilt 5.



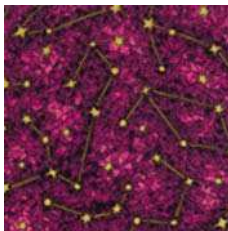
Make 5



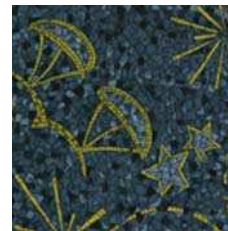
Make 4



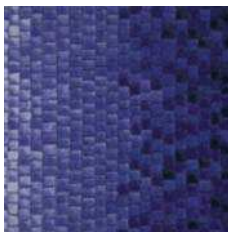
Make 4



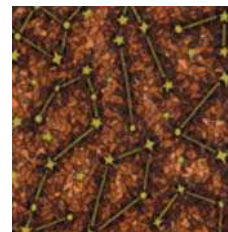
5591-02
Cut 72 "A" templates



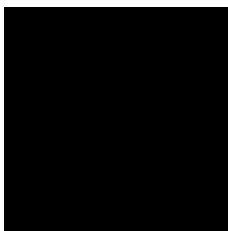
5590-04
Cut 32 "A" templates



5595-06
Cut 72 "A" templates

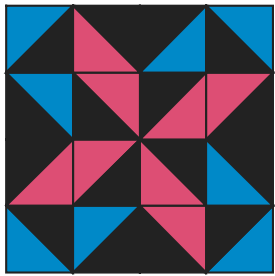
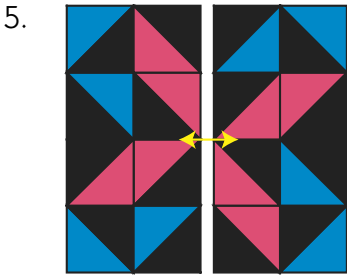
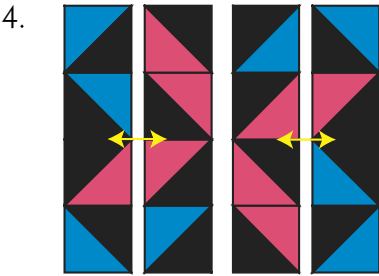
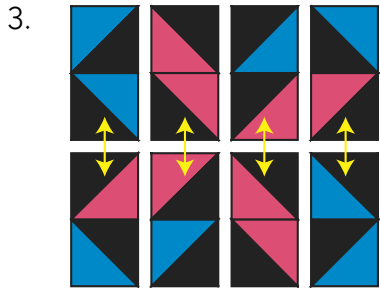
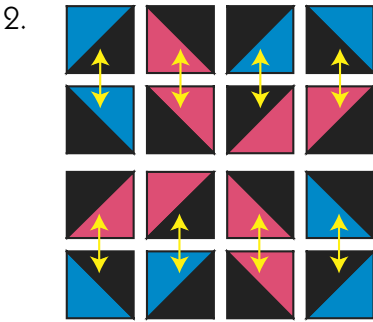
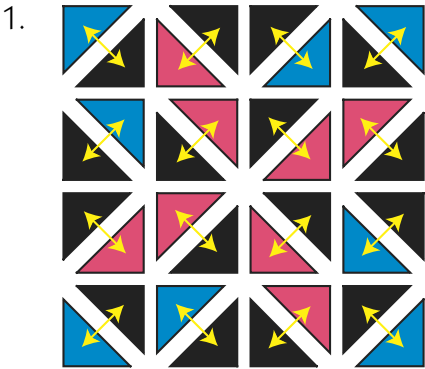


5591-03
Cut 32 "A" templates



Solid Black
Cut 208 "A" templates

Sewing the Mosaic No. 13 Block



Finished Block

Cutting out the Twelve Triangles Blocks

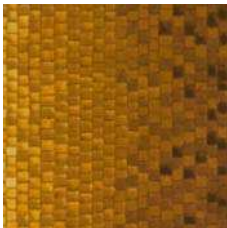
At the end of these directions are three different options for constructing one of the *Twelve Triangles block* — rotary cutting, templates, and foundation pattern — all generated from *Electric Quilt 5*.



Make 4



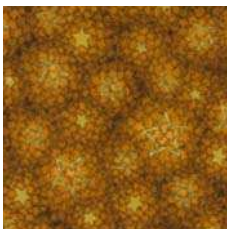
Make 8



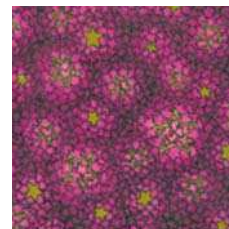
5595-07
Cut 24 “A” templates



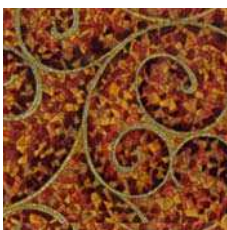
5595-02
Cut 24 “A” templates



5593-07
Cut 24 “C” templates



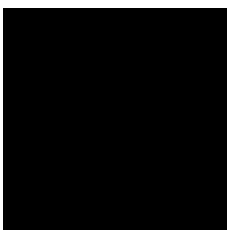
5593-02
Cut 24 “C” templates



5591-02
Cut 12 “B” templates



5594-06
Cut 4 “B” templates



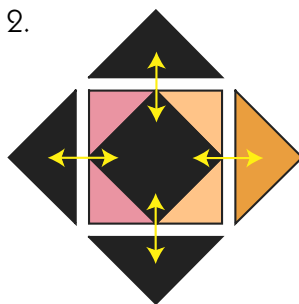
Solid Black
Cut 32 “B” templates
Cut 12 “D” templates

Sewing the Twelve Triangles Blocks

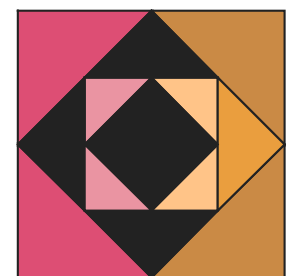
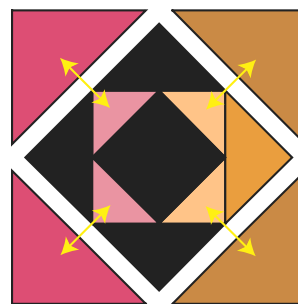
1.



2.



3.



Finished Block

Cutting out the Half-Twelve Triangles Block

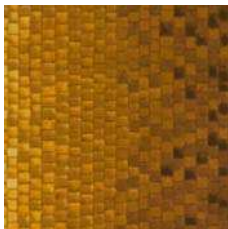
At the end of these directions are three different options for constructing one of the [Half-Twelve Triangles block](#) — rotary cutting, templates, and foundation pattern — all generated from [Electric Quilt 5](#).



Make 4



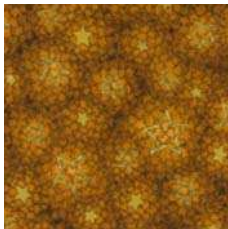
Make 8



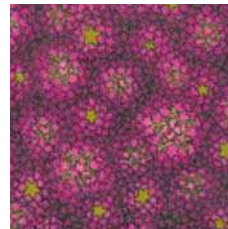
5595-07
Cut 8 “A” templates



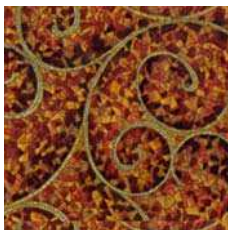
5593-02
Cut 16 “A” templates



5593-07
Cut 8 “B” templates



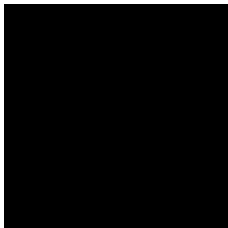
5593-02
Cut 16 “B” templates



5592-03
Cut 4 “C” templates



5594-06
Cut 8 “C” templates



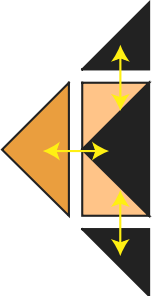
Solid Black
Cut 24 “B” templates
Cut 12 “C” templates

Sewing the Half-Twelve Triangles Block

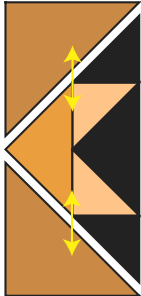
1.



2.



3.

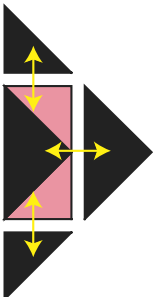


Finished Block

1.



2.

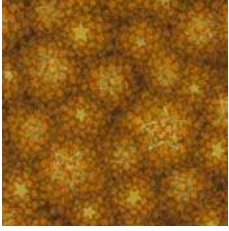


3.

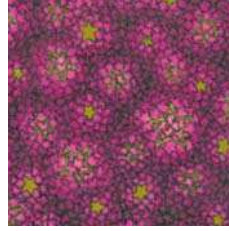


Finished Block

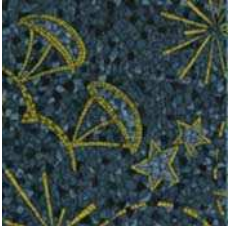
Fabric Yardage



5593-07
Pieced Blocks: 1/4 YARD



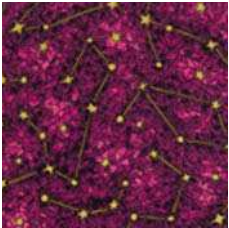
5593-02
Pieced Blocks: 1/4 YARD
Backing: 3 3/4 YARDS



5590-04
Pieced Blocks: 1/4 YARD



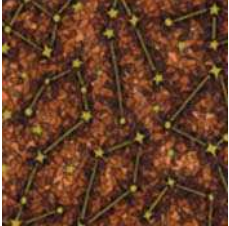
5594-06
Pieced Blocks: 1/4 YARD



5591-02
Pieced Blocks: 3/8 YARD
Border 2: 1/2 YARD



5595-02
Pieced Blocks: 5/8 YARD



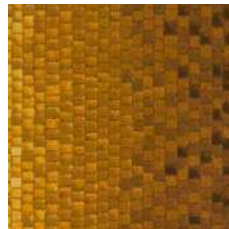
5591-03
Pieced Blocks: 1/4 YARD



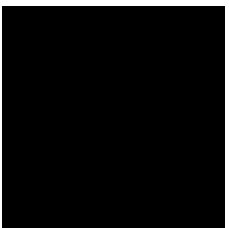
5595-06
Pieced Blocks: 3/8 YARD



5592-03
Pieced Blocks: 1/4 YARD



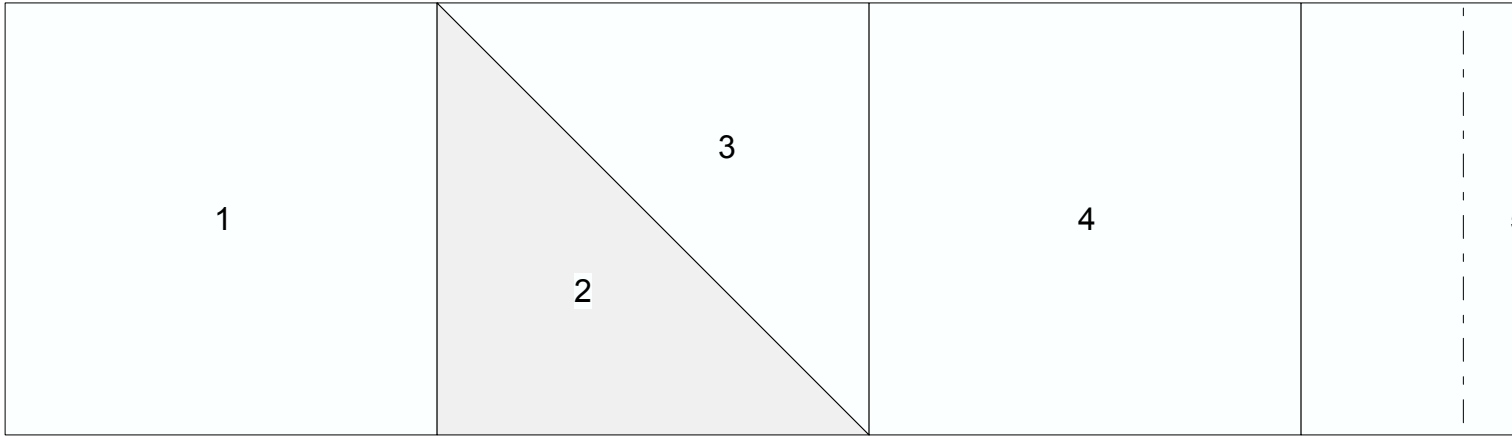
5595-07
Pieced Blocks: 5/8 YARD



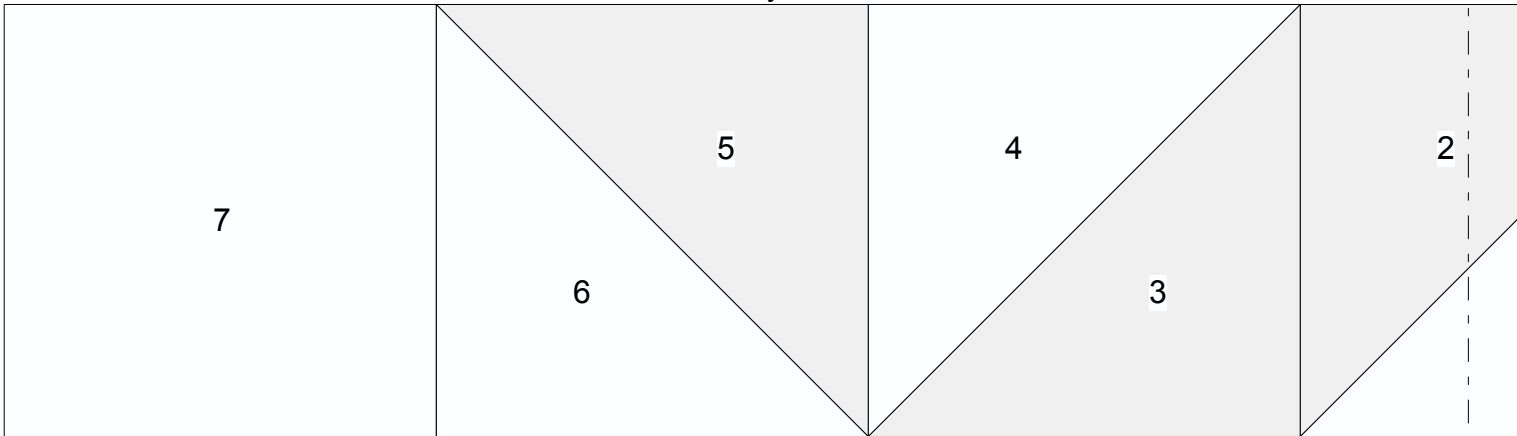
Solid Black
Pieced Blocks: 1 3/4 YARDS
Border 1: 1/2 YARD
Binding: 1/2 YARD
Cut 6 strips at 2 1/4" x 42".

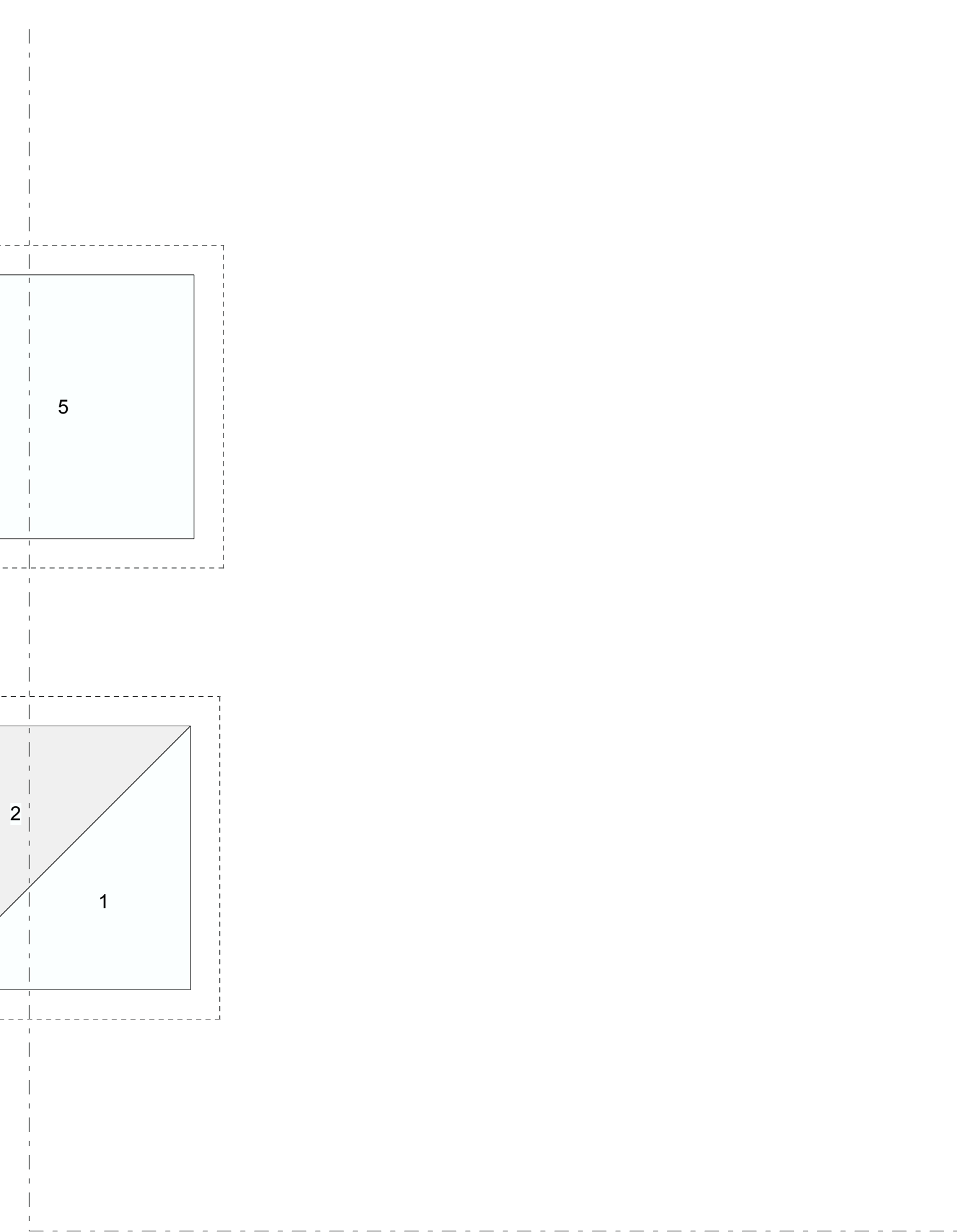
Clay's Choice

Clay's Choice Unit: A

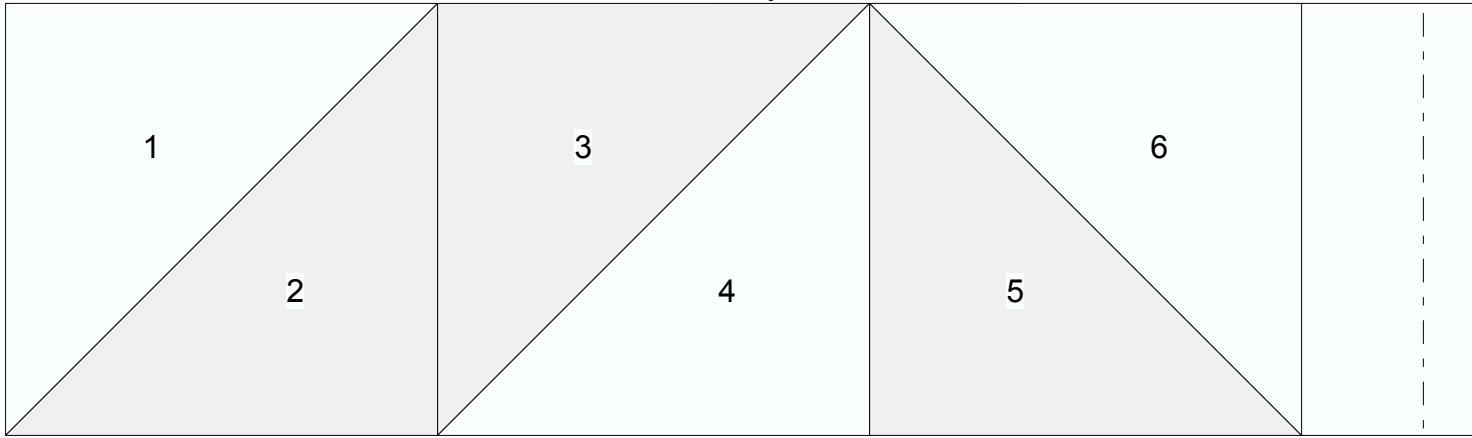


Clay's Choice Unit: B

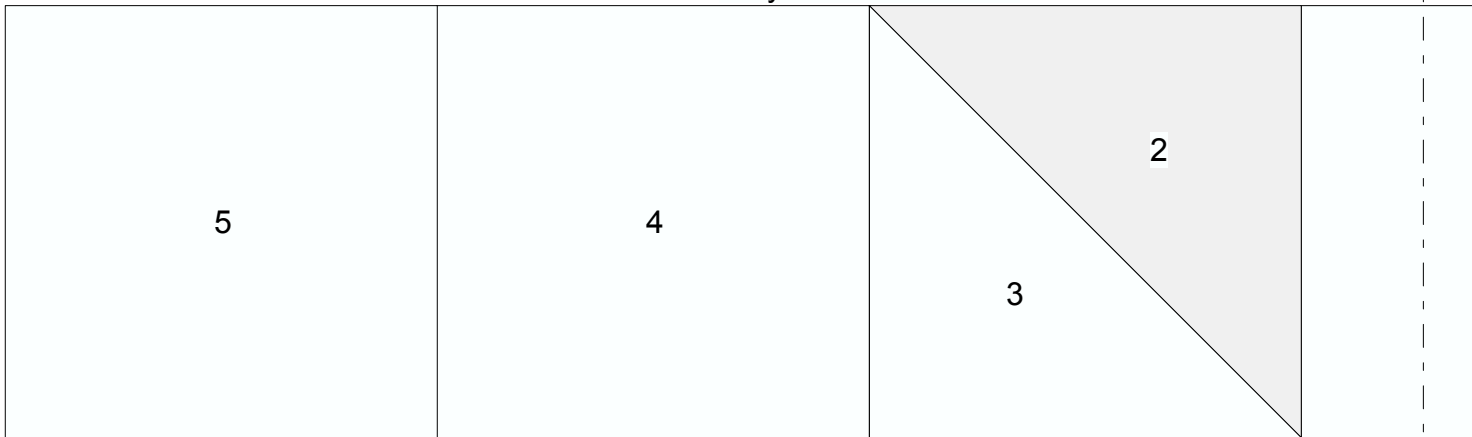




Clay's Choice Unit: C



Clay's Choice Unit: D

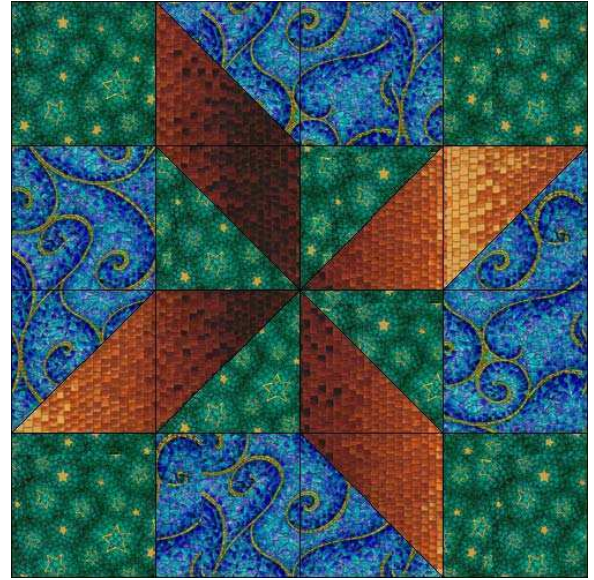
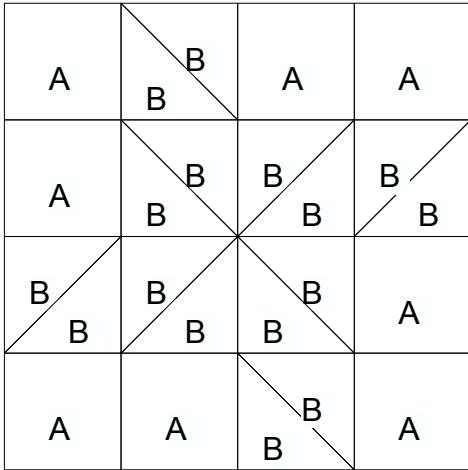


7

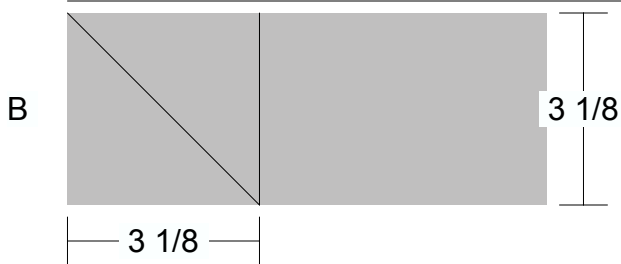
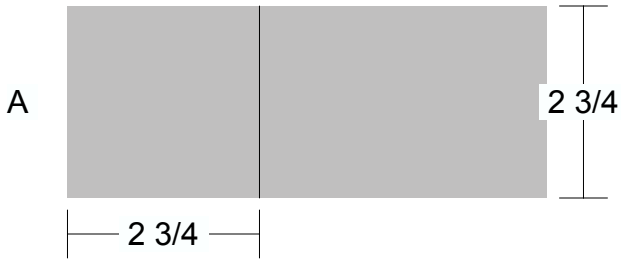
1

Clay's Choice

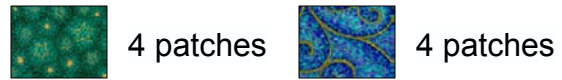
Pattern for 9.00x9.00 block
Key Block (27/100 actual size)



Cutting Diagrams

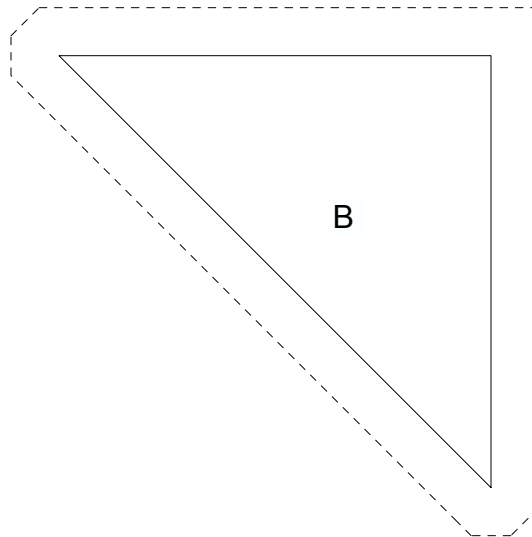
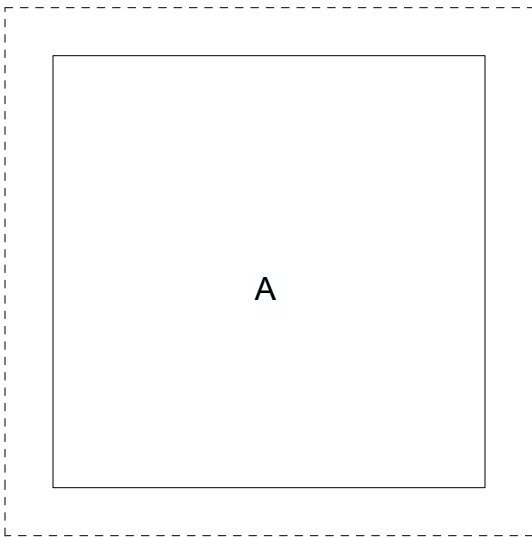
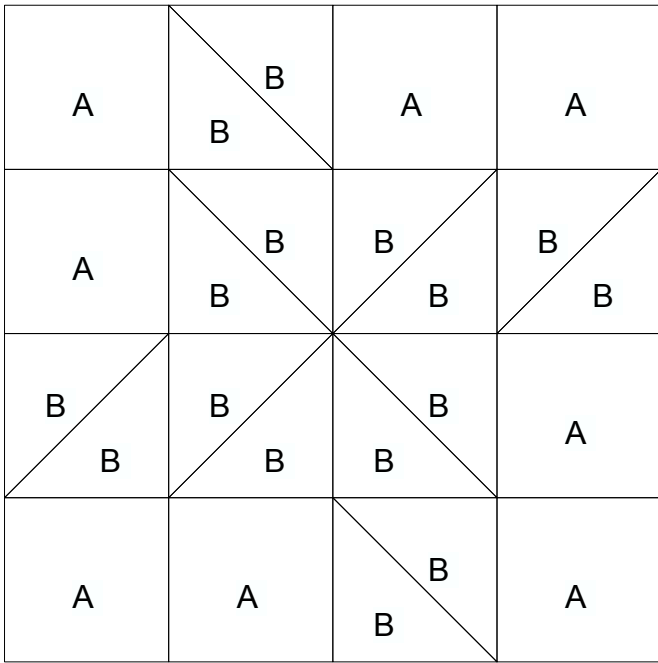


Patch Count

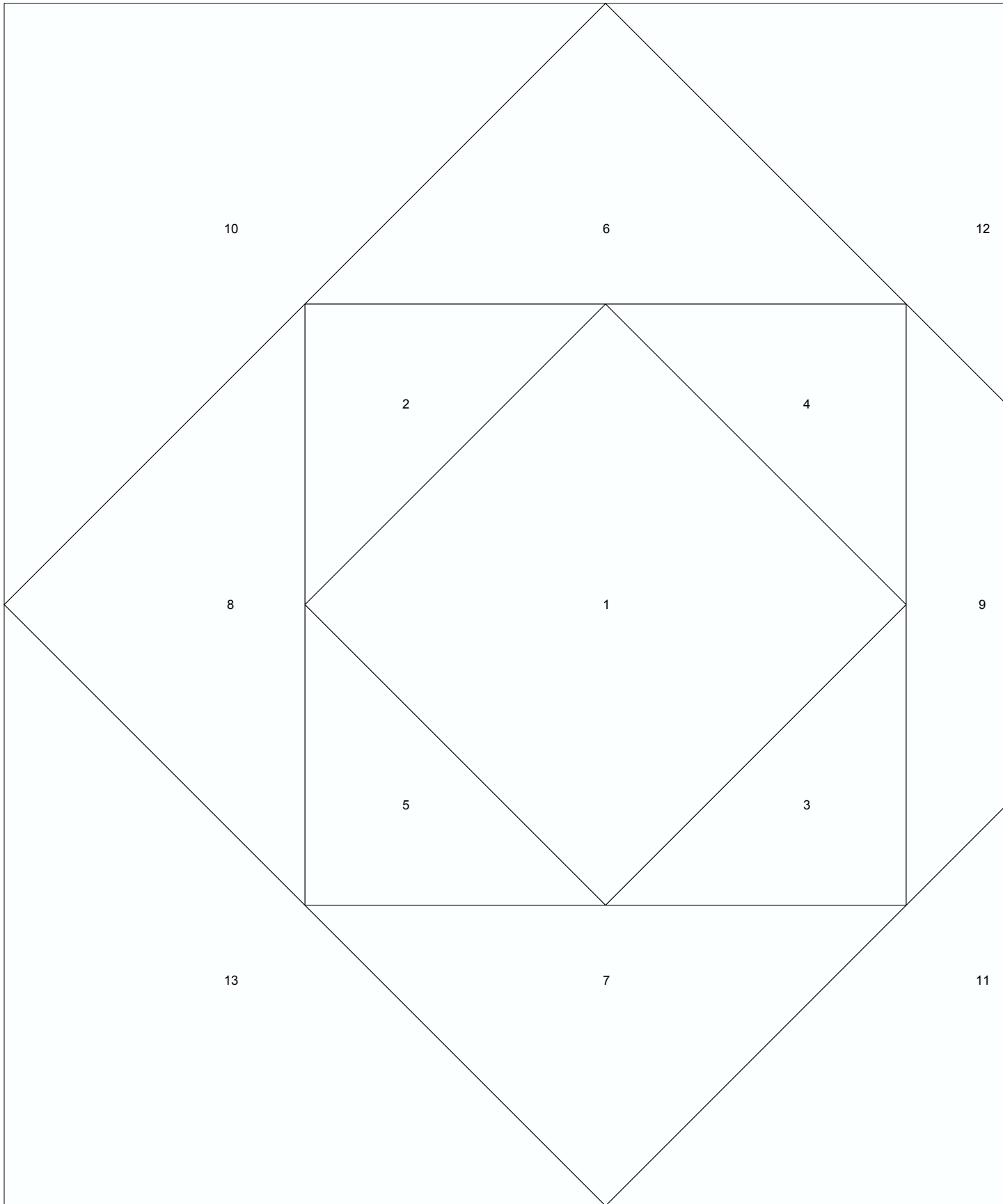


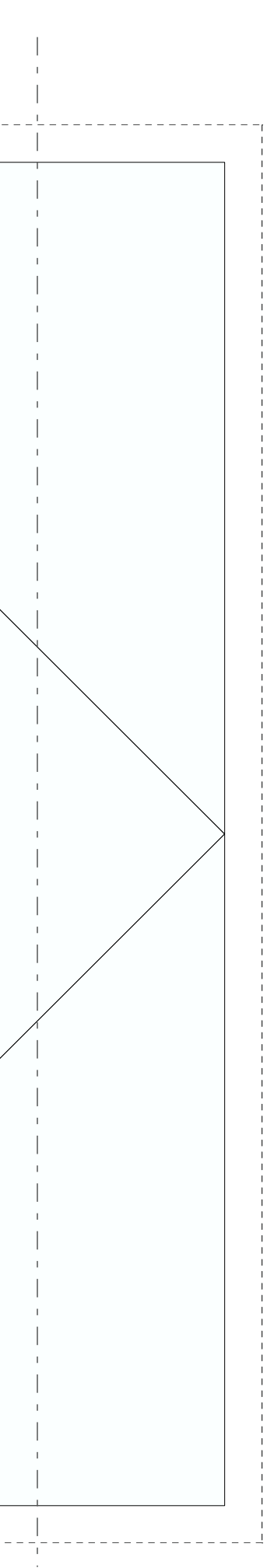
Clay's Choice

Pattern for 9.00x9.00 block
Key Block (19/50 actual size)



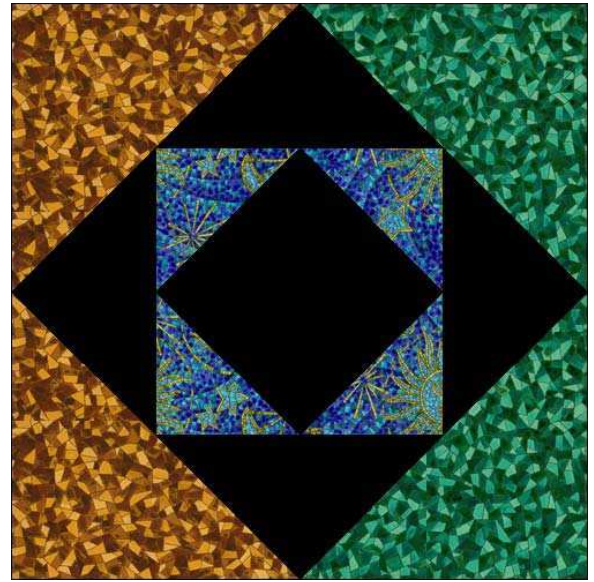
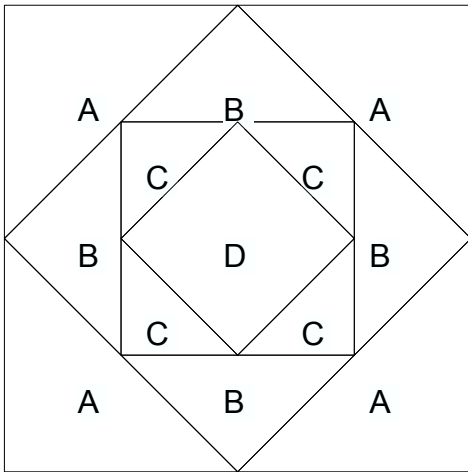
Twelve Triangles



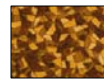
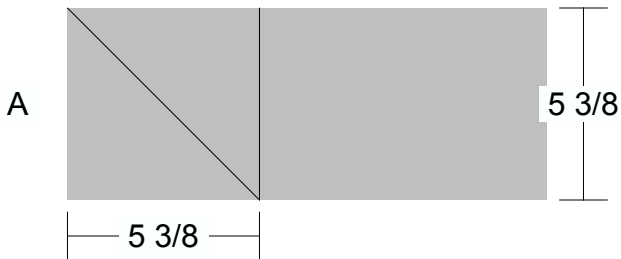


Twelve Triangles

Pattern for 9.00x9.00 block
Key Block (27/100 actual size)



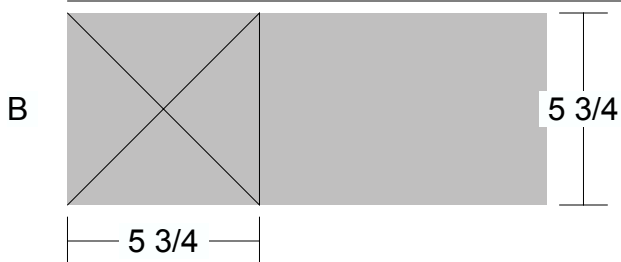
Cutting Diagrams



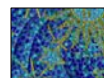
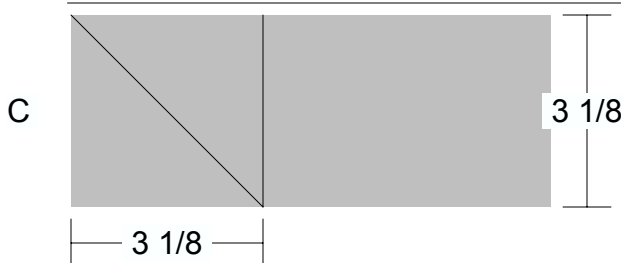
2 patches



2 patches

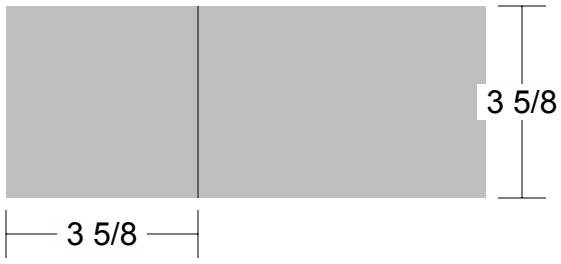


4 patches



4 patches

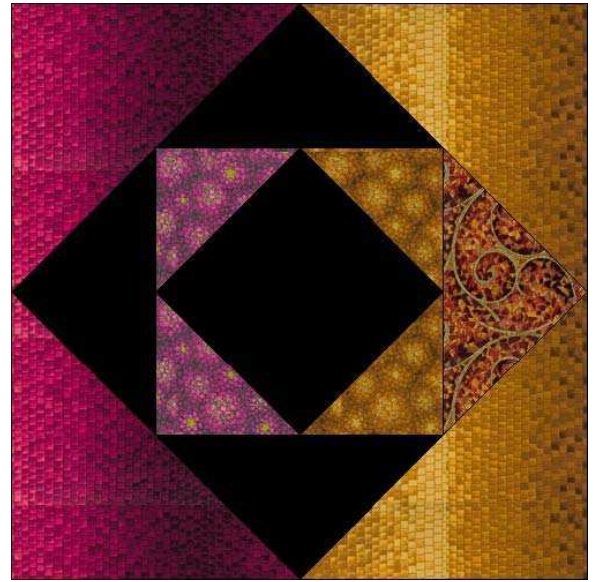
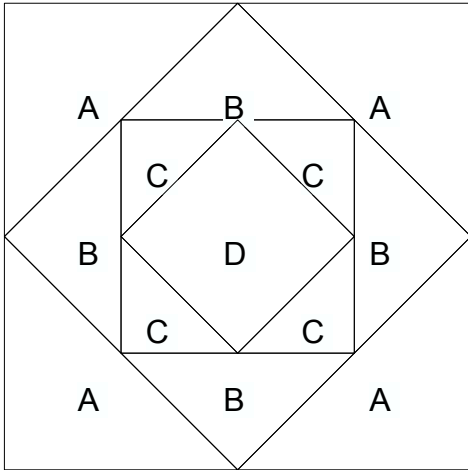
D



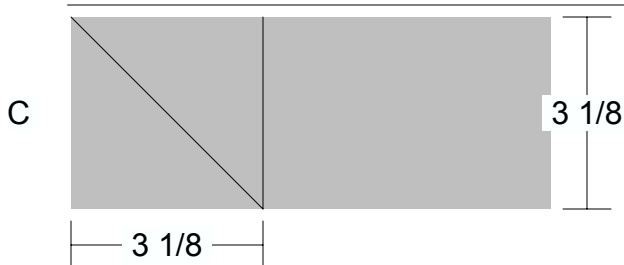
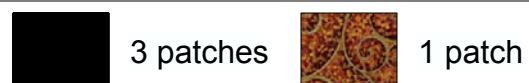
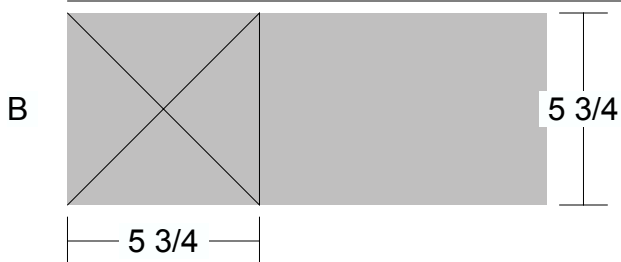
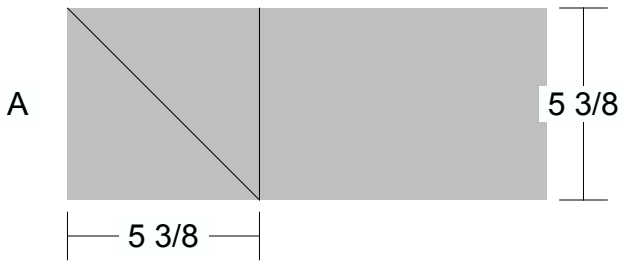
1 patch

Twelve Triangles

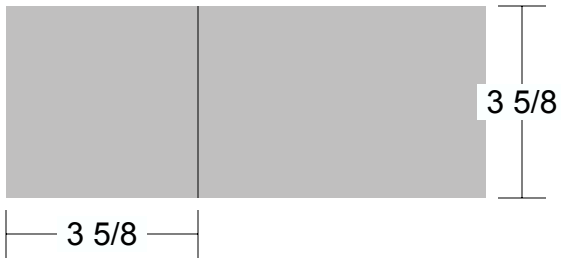
Pattern for 9.00x9.00 block
Key Block (27/100 actual size)



Cutting Diagrams



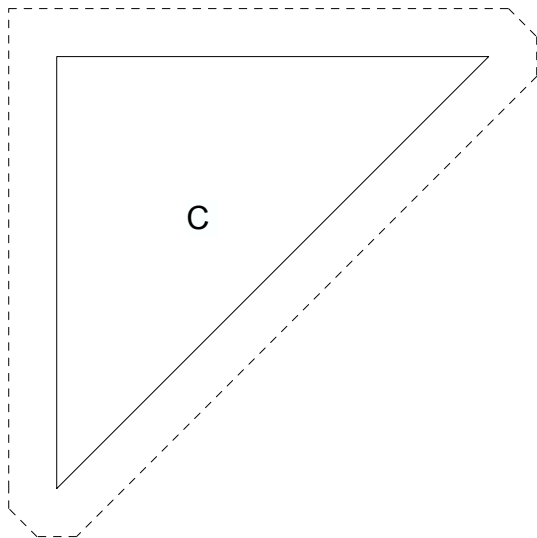
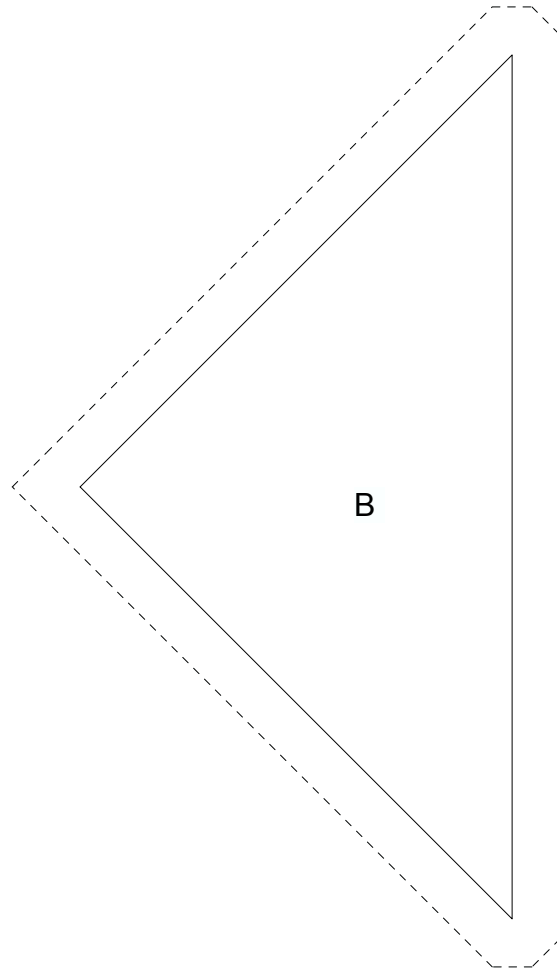
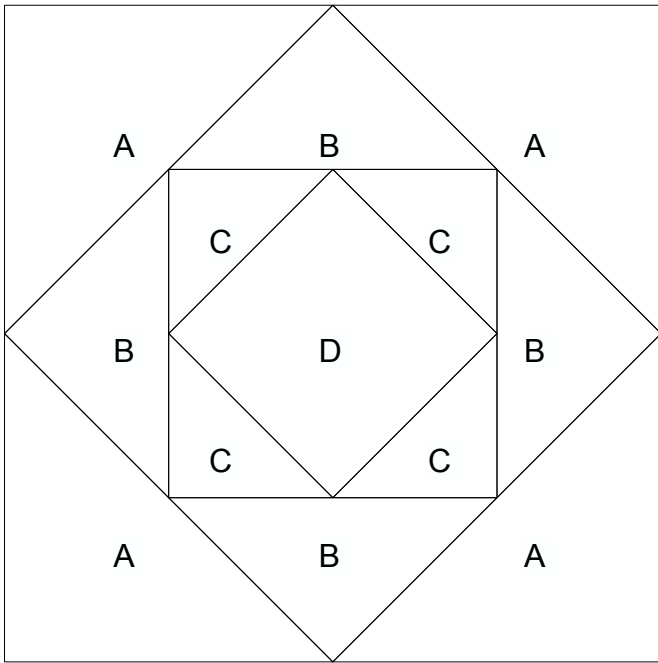
D

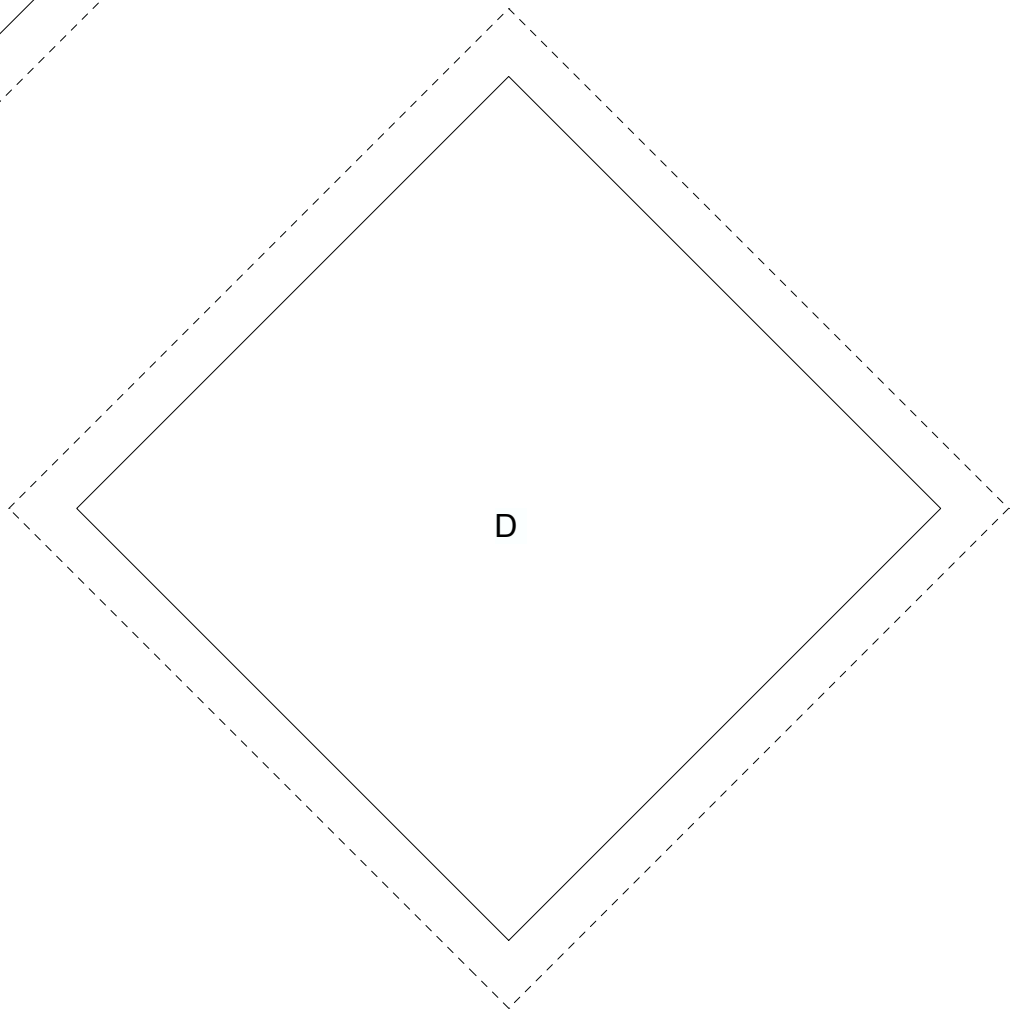
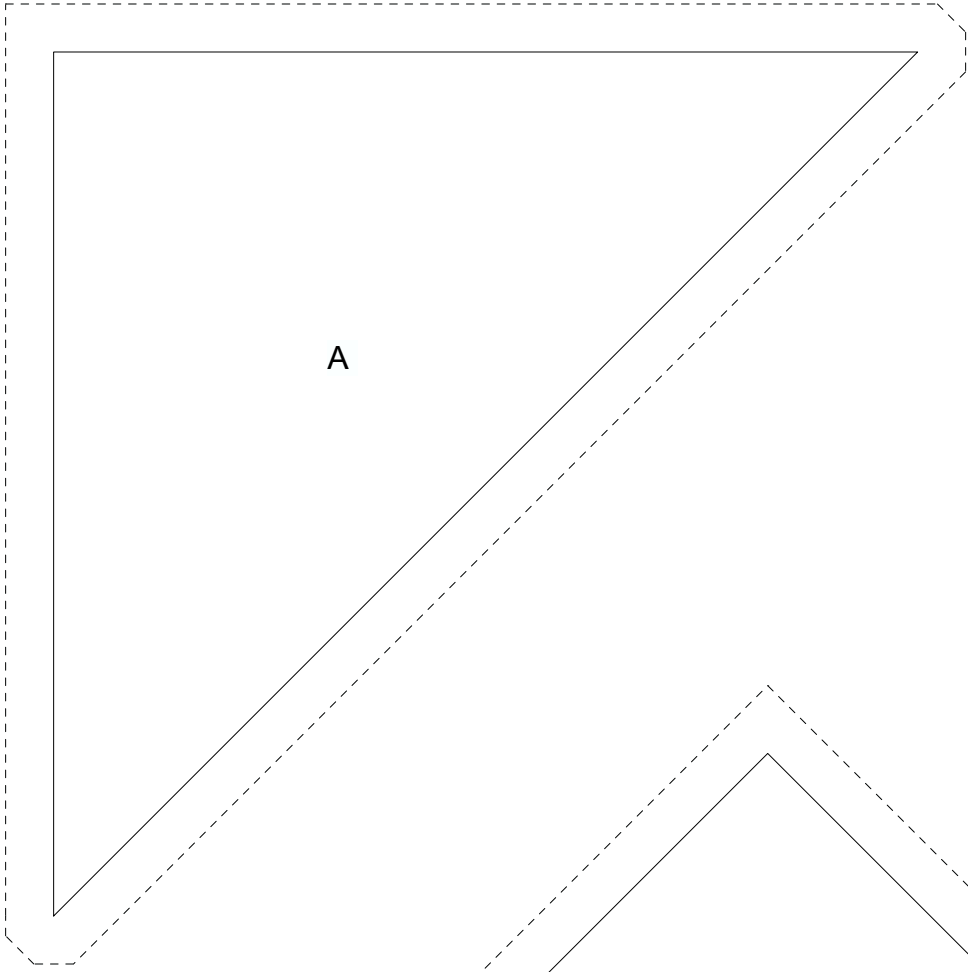


1 patch

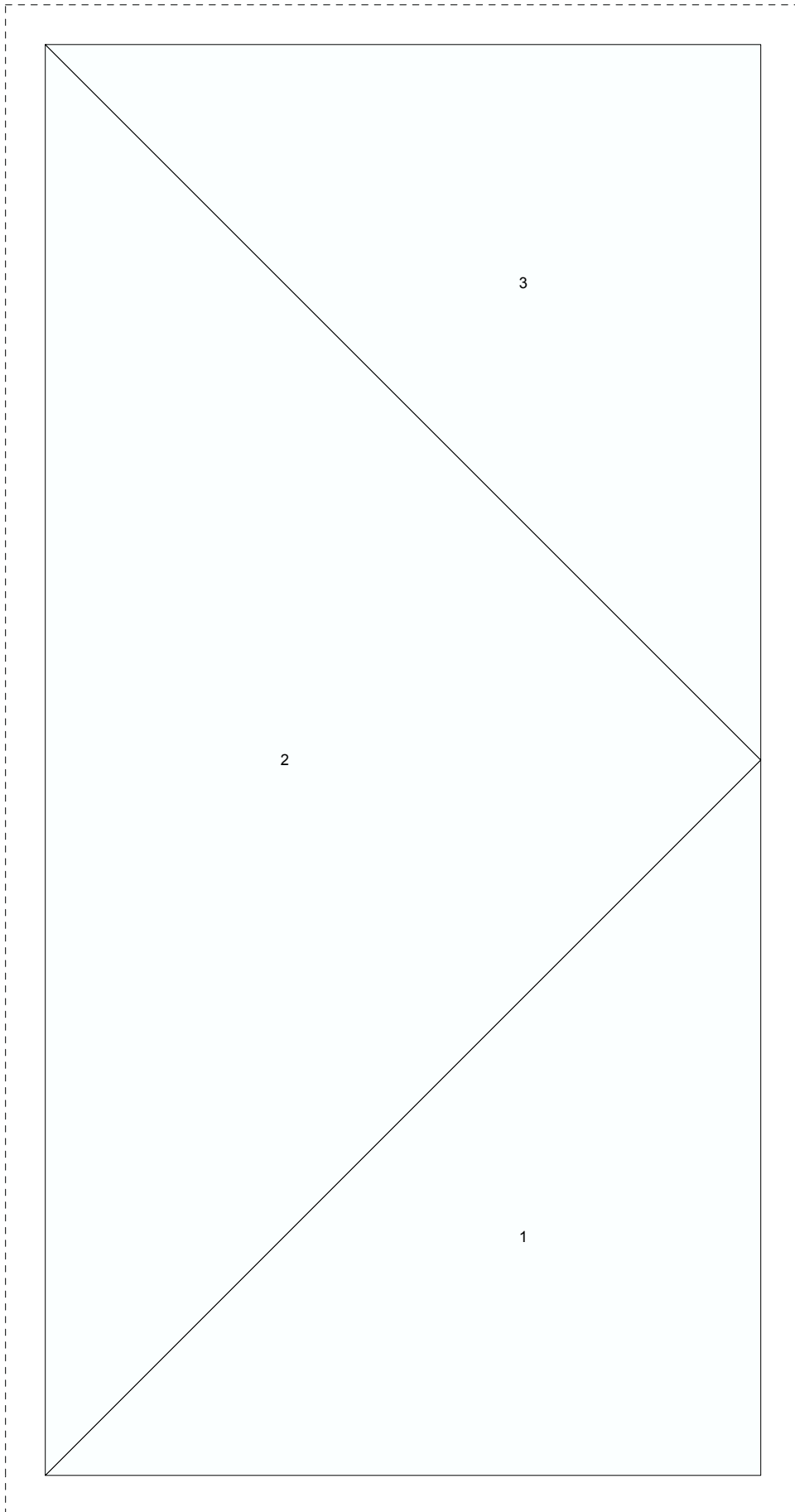
Twelve Triangles

Pattern for 9.00x9.00 block
Key Block (19/50 actual size)



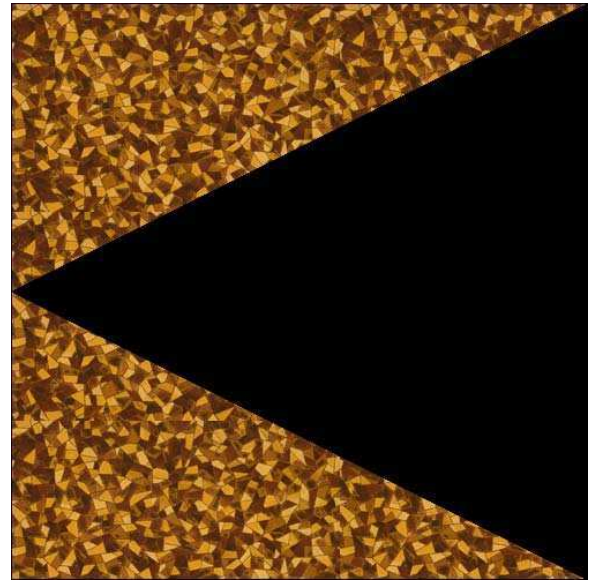
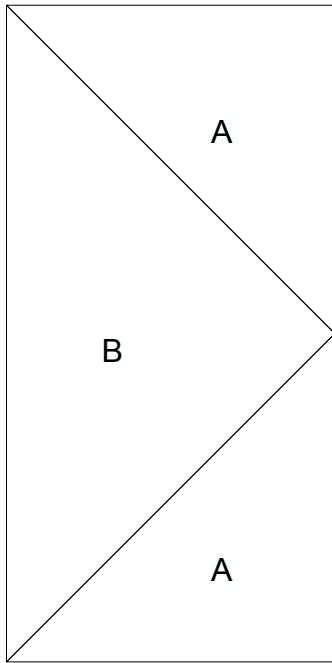


Half-Diamond in the Square

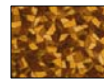
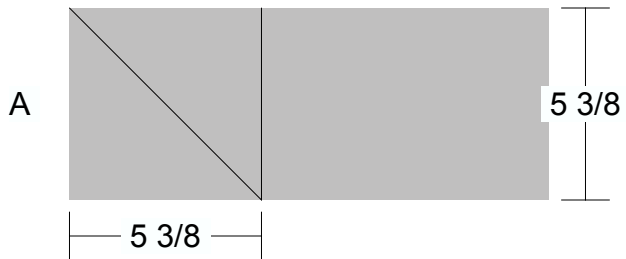


Half-Diamond in the Square

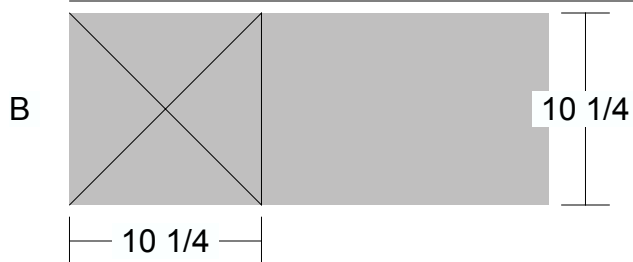
Pattern for 4.50x9.00 block
Key Block (19/50 actual size)



Cutting Diagrams



2 patches

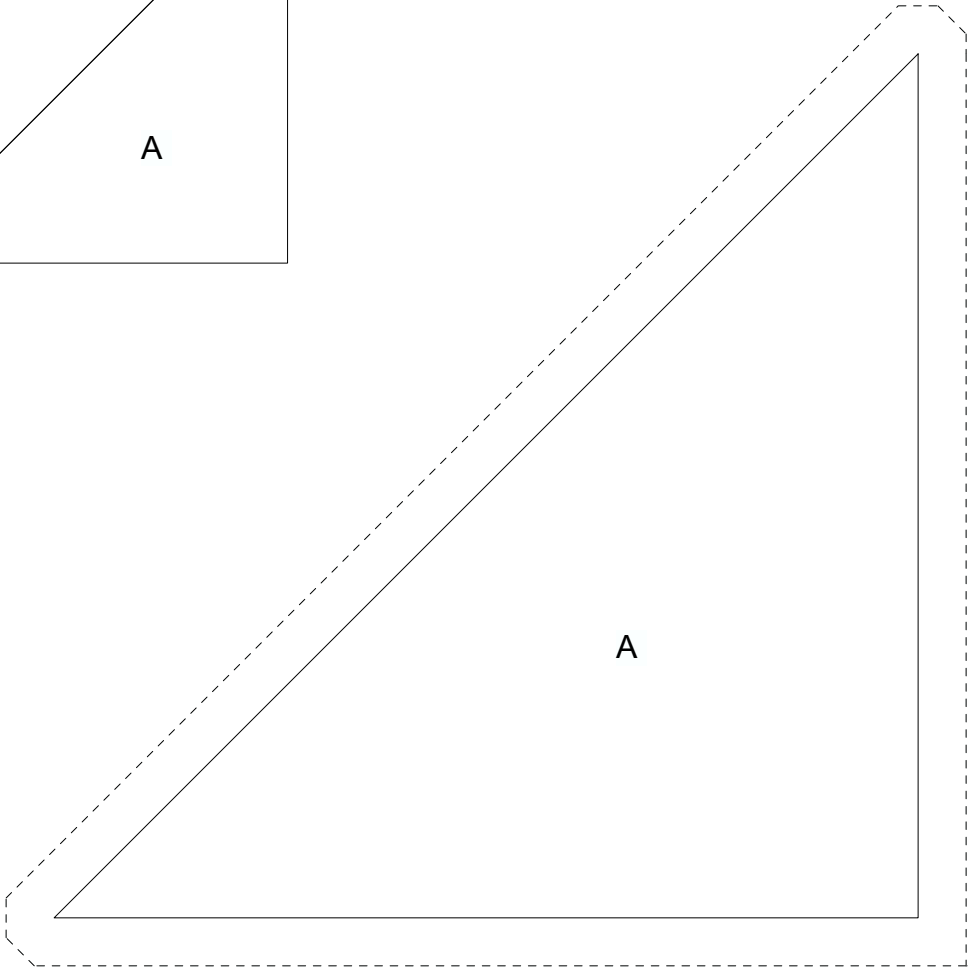
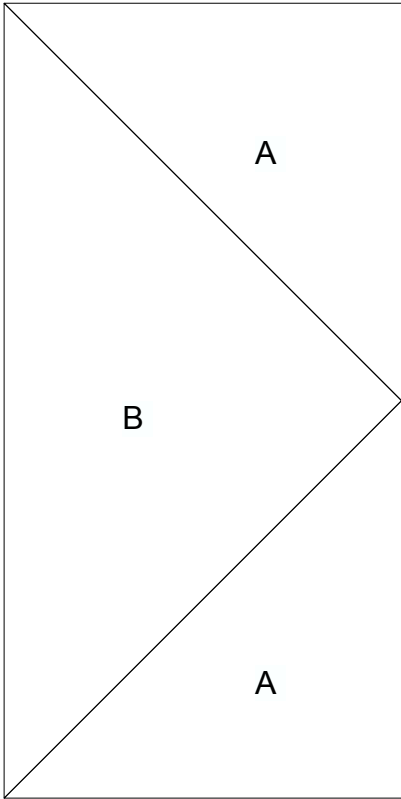


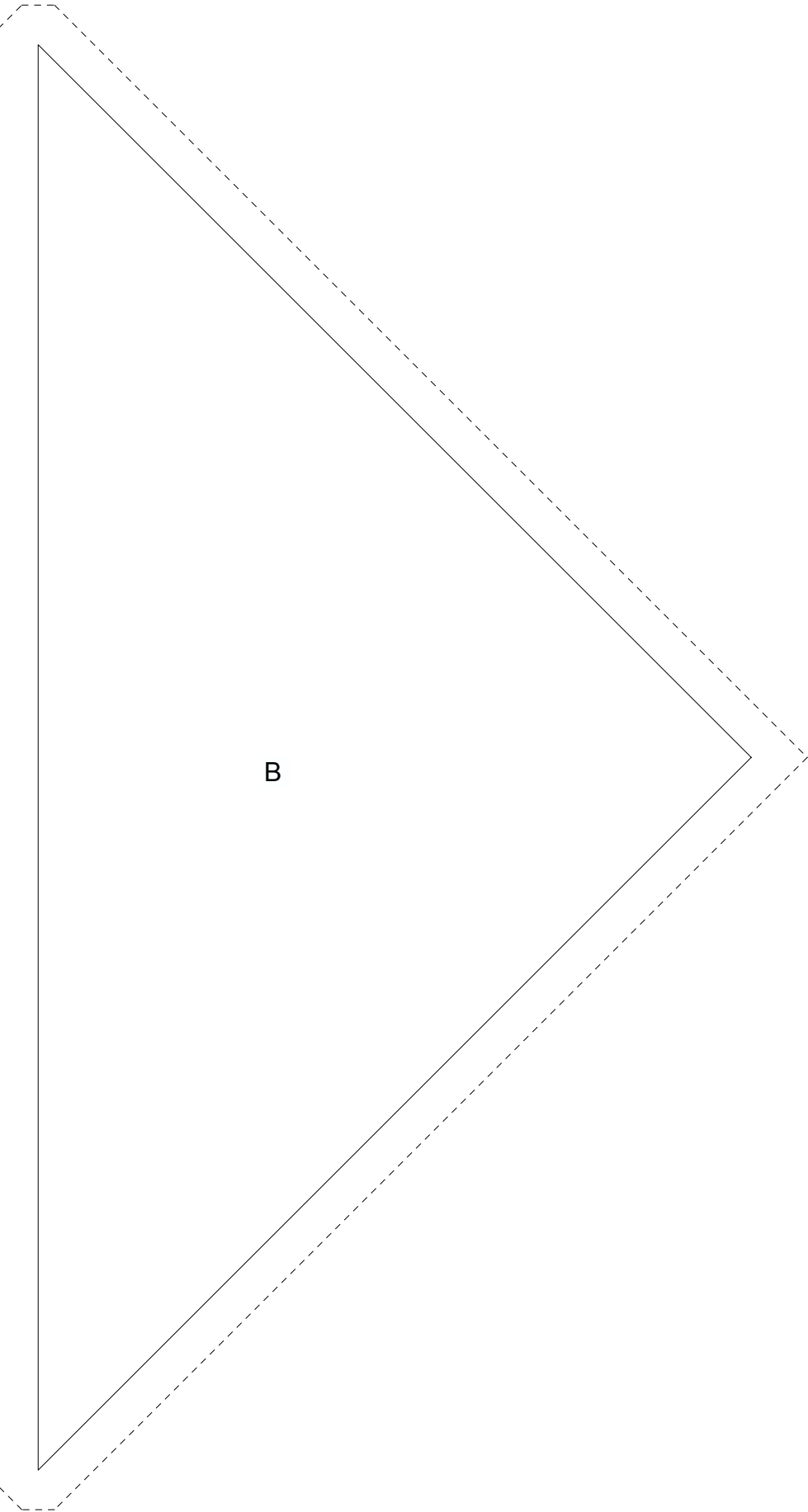
1 patch

Patch Count

Half-Diamond in the Square

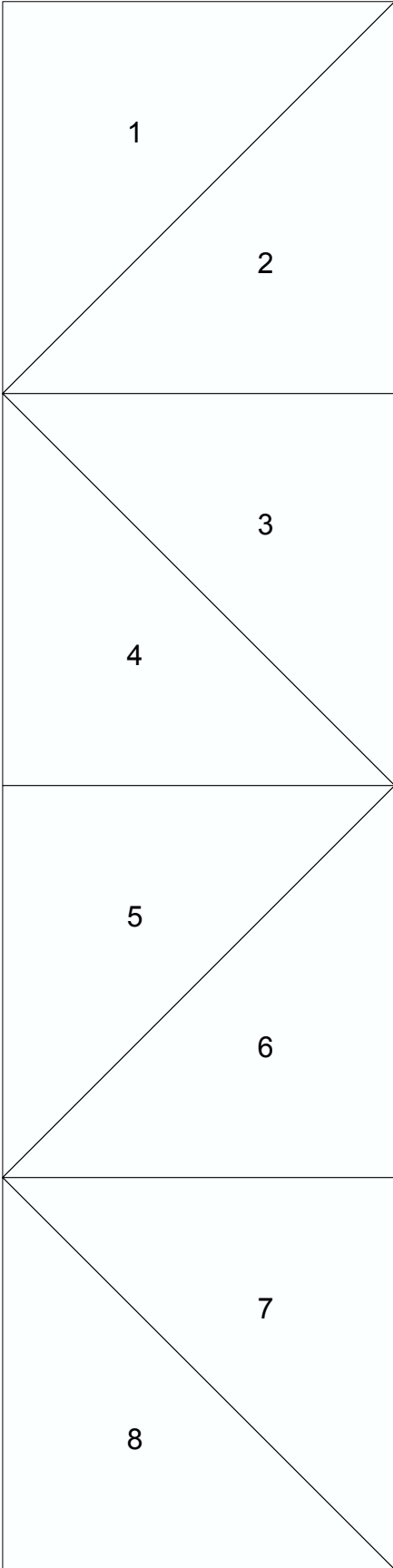
Pattern for 4.50x9.00 block
Key Block (23/50 actual size)





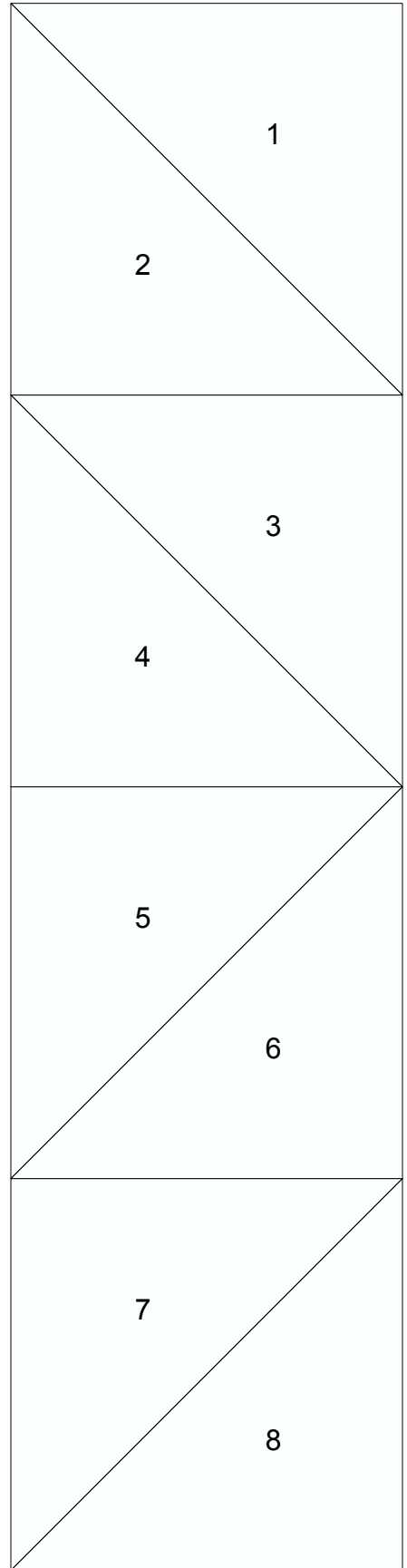
B

Mosaic, No. 13 Unit: A

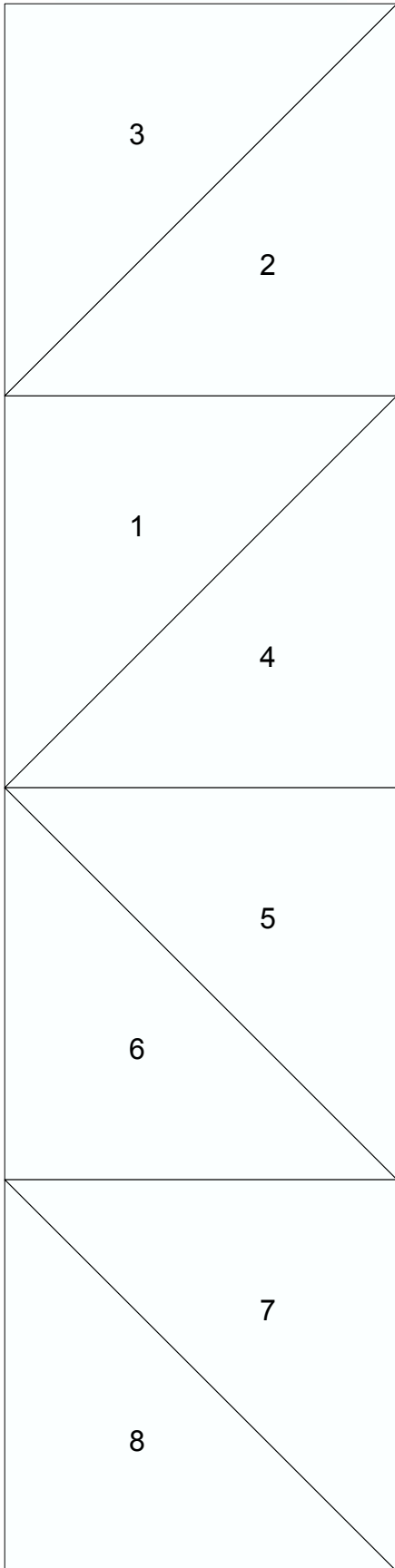


Mosaic, No. 13

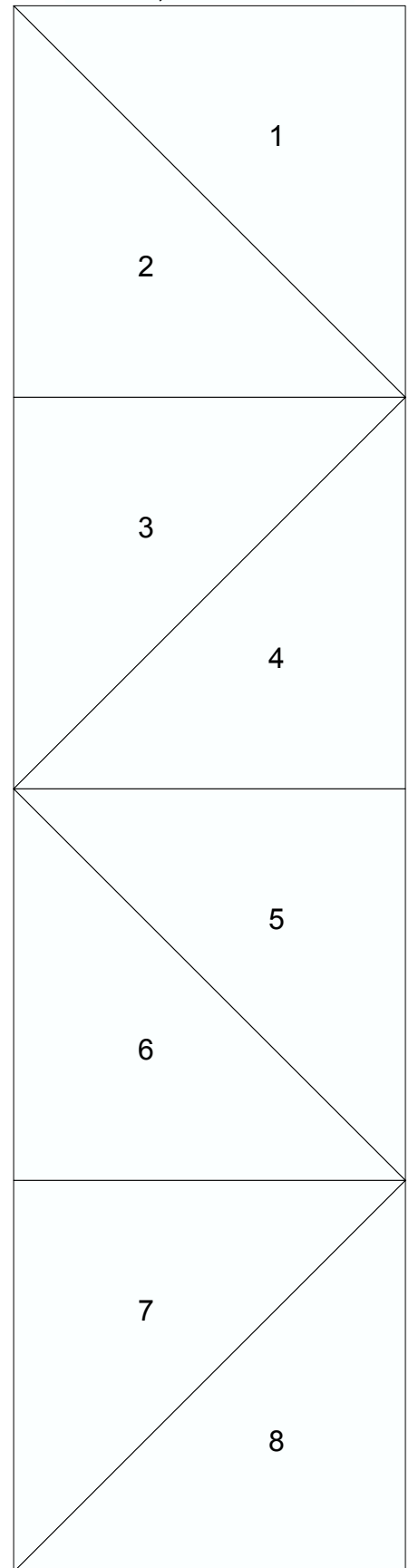
Mosaic, No. 13 Unit: D



Mosaic, No. 13 Unit: C

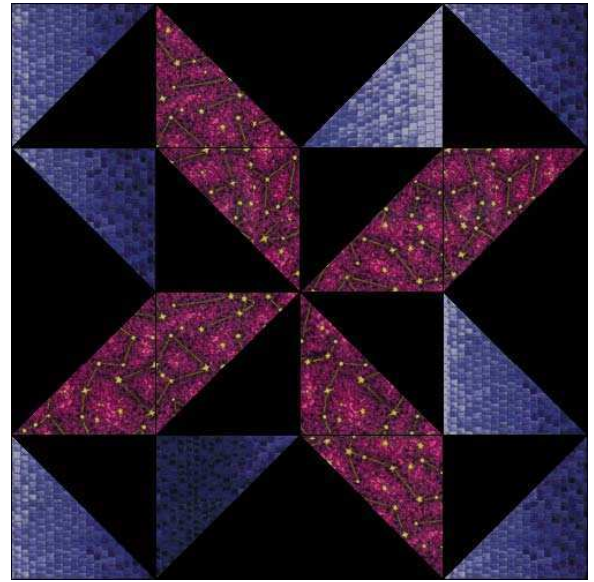
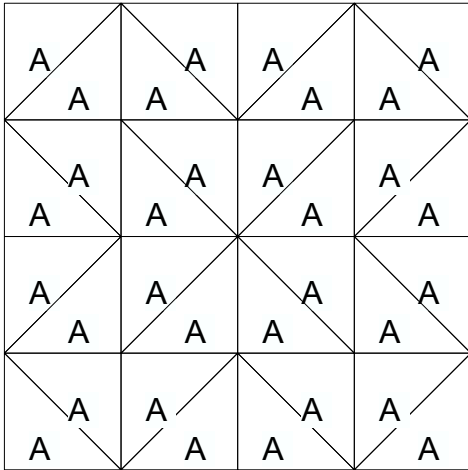


Mosaic, No. 13 Unit: B

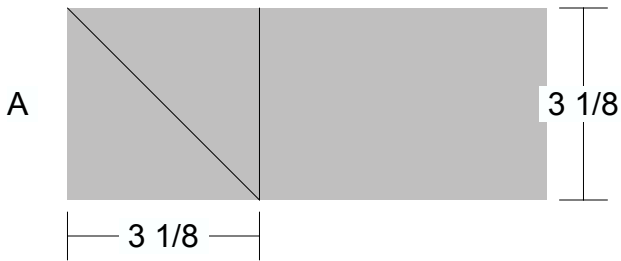


Mosaic, No. 13

Pattern for 9.00x9.00 block
Key Block (27/100 actual size)



Cutting Diagrams



Patch Count



8 patches



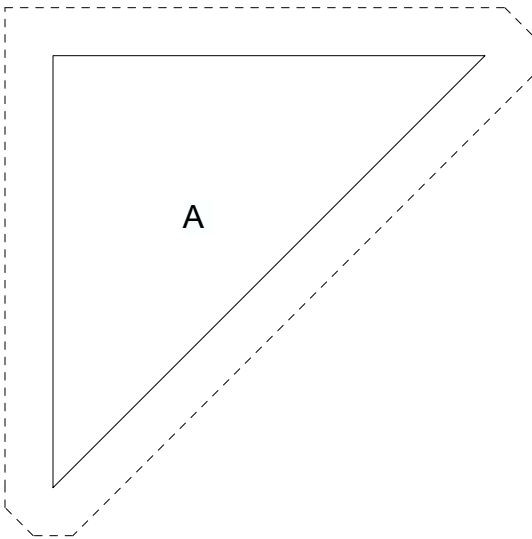
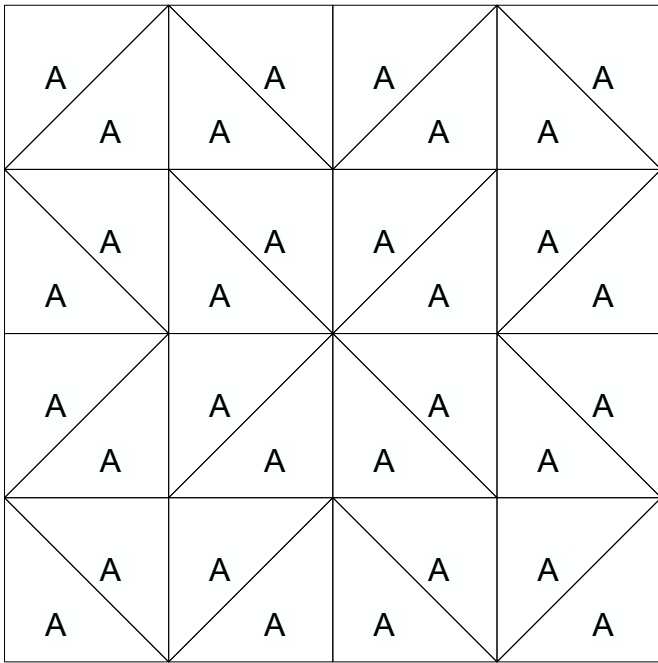
16 patches



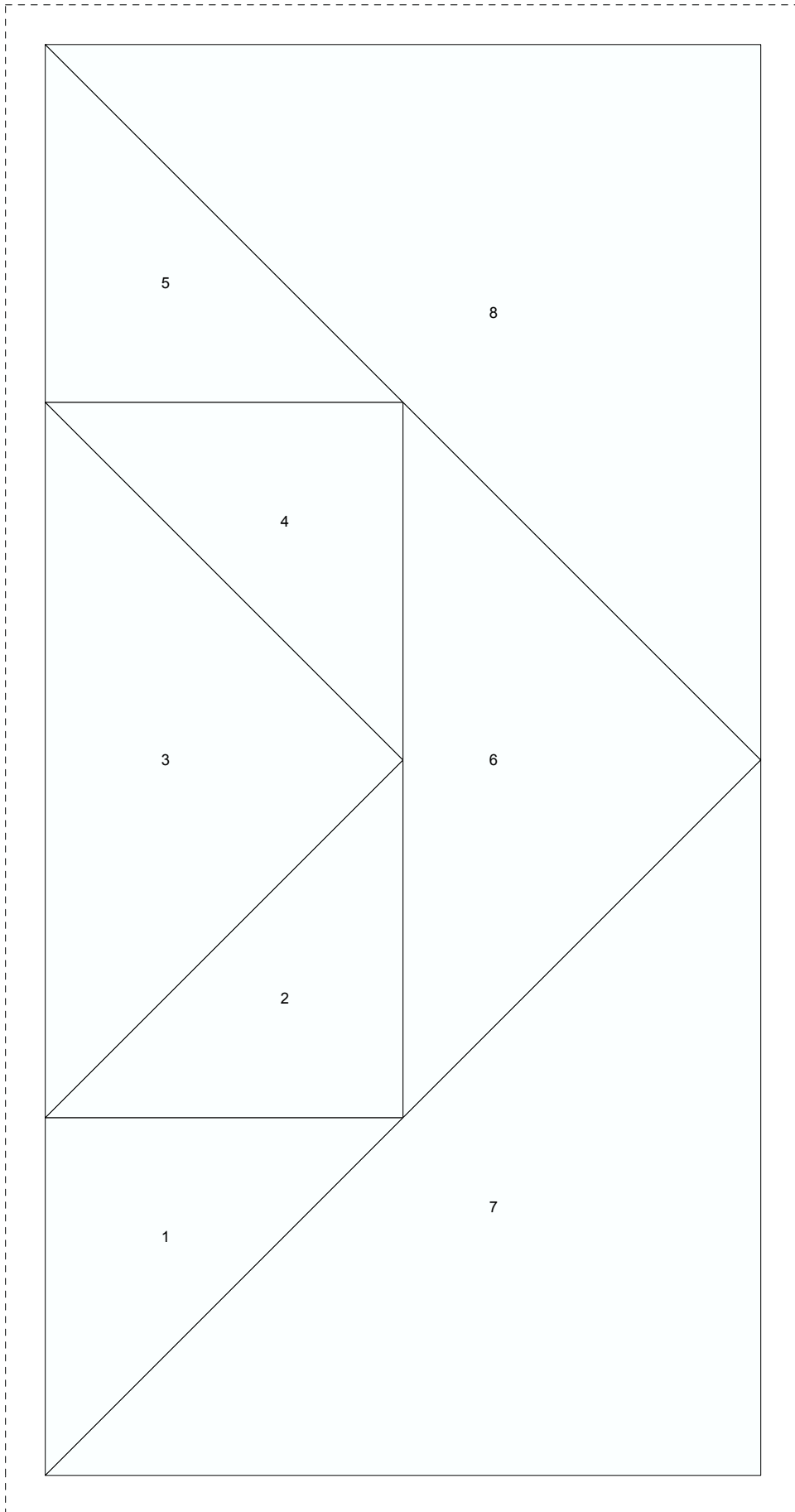
8 patches

Mosaic, No. 13

Pattern for 9.00x9.00 block
Key Block (19/50 actual size)

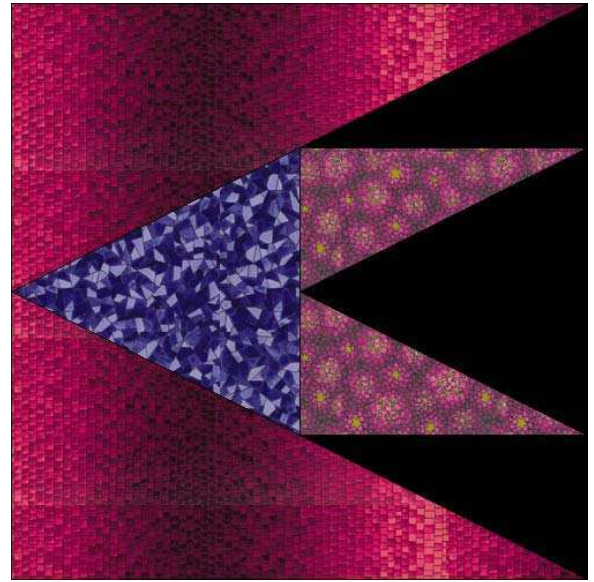
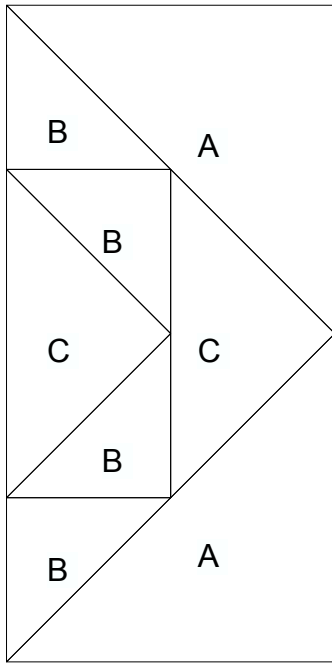


Half-Twelve Triangles



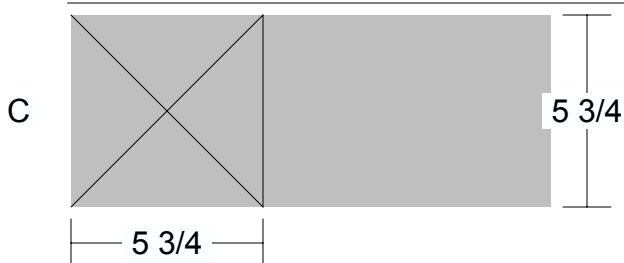
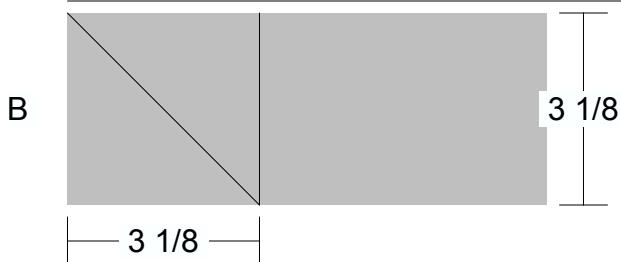
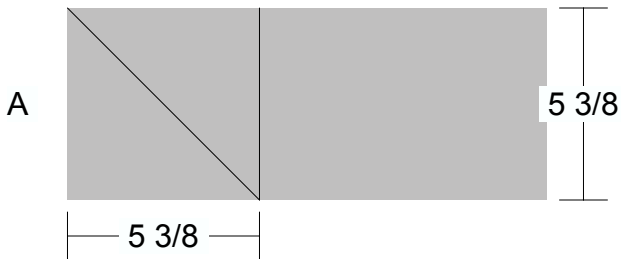
Half-Twelve Triangles

Pattern for 4.50x9.00 block
Key Block (19/50 actual size)



Cutting Diagrams

Patch Count



Half-Twelve Triangles

Pattern for 4.50x9.00 block
Key Block (23/50 actual size)

